

11.1 Ordering Parts

For your convenience, replacement parts and accessories can be ordered from ARPAC[®] by fax 24 hours a day. Please have the following information available to ensure quick, easy, and accurate service.

- Your name and telephone number
- Your P.O. (Purchase Order) number
- Your preferred method of delivery

11.1.1 Replacement Parts Policy & Contact Information

Should a replacement part be needed, ARPAC[®]'s return material authorization policy must be adhered to. ARPAC[®] will not distribute equipment or parts without a purchase order from an authorized ARPAC[®] distributor. This procedure includes warranty and non-warranty replacement parts. A return authorization will be issued at that time, and credit will not be issued until the suspect part has been received and inspected. Call ARPAC[®] sales for the distributor in your area at (847) 678-9034.

ARPAC[®] Parts Contact Information

Phone: (847) 678-9034

Fax: (847) 678-2109

24 Hour Emergency Service: (800) 424-0545

parts@arpac.com

**Open for service Monday through Friday,
7:00 AM to 6:00 PM (Central Time)**

11.2 How to Use This Parts List

11.2.1 General Part Numbers

This chapter contains all part numbers necessary to order Pro Series LPC replacement parts and assemblies.

This illustrated parts breakdown is presented in disassembled order. Detail parts are shown below their respective upper level assemblies whenever possible.

The parts lists follow the illustration for a particular assembly and represent components of that assembly. The number listed in the quantity column is the number of the specific part required to complete the assembly and may not reflect the quantity needed for the entire system.

The lists are divided into four columns. The item/index numbers refer to the identification number located on the drawing. The part number is the Arpac part number, used to identify the part for ordering. The part description column lists each part name, and the quantity column lists the quantity of that part used in that particular assembly.

Illustrations are shown before the parts list for each assembly.

11.3 Commonly Ordered Parts

Part Description	Part number
Drive, DC, 1/4-1 H.P. 90VDC	804012.190
Drive, Regenerative 1/4-1H.P.	804012.182
Magnet, Rectangular Pressure Sensitive Adhesive	822976.
Fuse, Glass AGC 8 Amp/250VAC	804998.231
Fuse-Glass AGC 2 Amp/250VAC	803998.226
Fuse-Glass AGC 10 Amp/250VAC	803998.233
Link, Connecting, #40	800502.
Link, Connecting, Offset #40	800523.
Link, Connecting, #50	800505.
Link, Connecting, Offset #50	800522.
Caster Wheel Assembly	205114.000A
Sidewinder 4 High Pro-File Series Installation, Operation & Service Manual	100003.301
Spare Parts Kit - Wrap & Weigh	237442
Consists of:	
Base to Tower Cable Assembly	237441
Connector, 10P, Insert Female 16A	825005.057
Connector, 10P, Base, Panel Mount, Single Lock	825005.053
Grommet, 1" Hole, Rubber	825012
Load Cell, 4K, Pennsylvania Scale	804998.503
Trim Board - Pennsylvania Scale	821096
Scale, Digital Readout - Pennsylvania Scale	821093
Connector, Strain Relief	804994.912
Spare Parts Kit - Fuses	206456
Consists of:	
5 Fuses, 2 AMP/250VAC	804998.226
5 Fuses, 8 AMP/250VAC	804998.231
1 Magnet, Round With Pressure Sensitive Adhesive Backing	822977

Table 11-1: Commonly Ordered Parts

11.4 Overall Assemblies



Figure 11-1. Overall Assemblies

Fig ref.	Part number	Description	Qty
1	SW-40XX - HP	Sidewinder® 4-Series High Profile Assembly (See Section “11.5 Sidewinder® 4-Series High Profile” on page 11-6 for breakdown of assembly)	1
2	SW-40XXW- LP	Sidewinder® 4-Series High Profile with Weigh Option Assembly (See Section “11.6 Sidewinder® 4-Series High Profile with Weigh Option” on page 11-8 for breakdown of assembly)	1

Table 11-2: Overall Assembly

11.5 Sidewinder[®] 4-Series High Profile



Figure 11-2. Sidewinder[®] 4-Series High Profile

Fig ref.	Part number	Description	Qty
1	235863.000A	Base Assembly (See Section “11.7 High Profile Base Assembly - Standard” on page 11-10 for breakdown of assembly)	1
2	229987.000A	Top Drive Tower Assembly (See Section “11.9 Tower Assembly - Standard” on page 11-14 for breakdown of assembly)	1
3	224855.000C	Side Mounted Film Saver Assembly (See Section “11.11 Side Mounted Film Saver Assembly” on page 11-17 for breakdown of assembly)	1
4	230210	Film Roll Support Assembly - Quick Load Mandrel (See Section “11.12 Film Roll Support Assembly” on page 11-20)	1
5	221410	Parts Kit, 200% Stretch, Film Saver	1
6	235230	Kit, Paint, Steel It, Semi-Auto	1
7	224911.	Swift Change Film Roll Support Assembly - Optional (See Section “11.14 Swift Change Film Support Roll Assembly” on page 11-23 for breakdown of assembly)	1
10	241645	Sidewinder Standard Electrical Parts (See Section “11.17 Control Assembly (Part 1)” on page 11-26 and Section “11.18 Control Assembly (Part 2)” on page 11-28 for breakdown of assemblies)	1
11	221563	Film Plunger Assembly (See Section “11.15 Film Plunger Assembly” on page 11-24 for breakdown of assembly)	1
13	206456	Kit, Fuse, SW Pro-Series	1

Table 11-3: Sidewinder® 4-Series High Profile

11.6 Sidewinder[®] 4-Series High Profile with Weigh Option

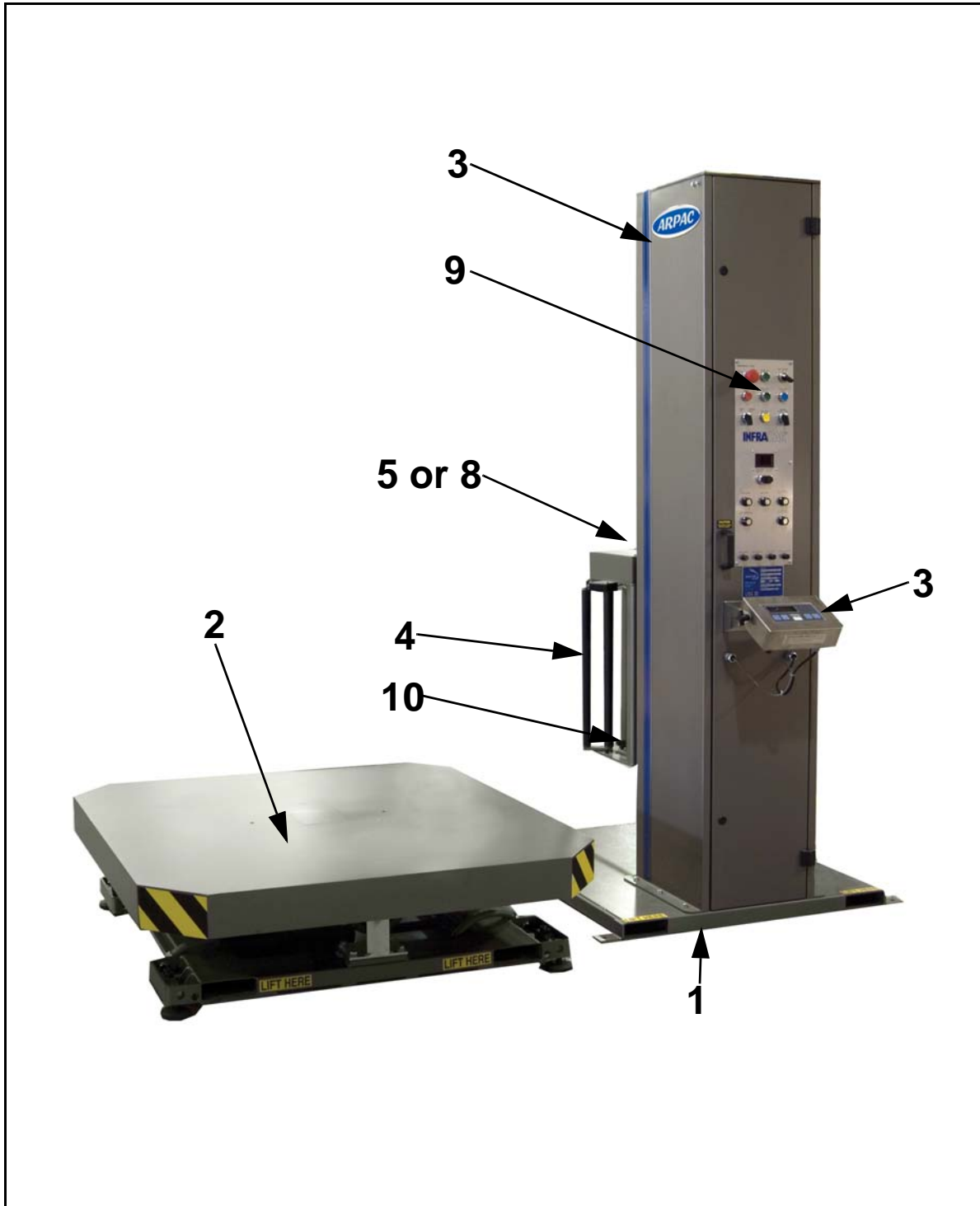


Figure 11-3. Sidewinder[®] 4-Series High Profile with Weigh Option

Fig ref.	Part number	Description	Qty
1	237470	Tower Base Assembly for Weigh Option (See Section “11.10 Tower Base Assembly” on page 11-16 for breakdown of assembly)	1
2	235940.000A	Base Assembly (See Section “11.8 High Profile Base Assembly - Weigh Option” on page 11-12 for breakdown of assembly)	1
3	229987.000A	Top Drive Tower Assembly (See Section “11.9 Tower Assembly - Standard” on page 11-14 for breakdown of assembly)	1
4	224855.000C	Side Mounted Film Saver Assembly (See Section “11.11 Side Mounted Film Saver Assembly” on page 11-17 for breakdown of assembly)	1
5	230210	Film Roll Support Assembly - Quick Load Mandrel (See Section “11.12 Film Roll Support Assembly” on page 11-20)	1
6	221410	Parts Kit, 200% Stretch, Film Saver	1
7	235230	Kit, Paint, Steel It, Semi-Auto	1
8	224911.	Swift Change Film Roll Support Assembly - Optional (See Section “11.14 Swift Change Film Support Roll Assembly” on page 11-23 for breakdown of assembly)	1
9	241645	Sidewinder Standard Electrical Parts (See Section “11.17 Control Assembly (Part 1)” on page 11-26 and Section “11.18 Control Assembly (Part 2)” on page 11-28 for breakdown of assemblies)	1
10	221563	Film Plunger Assembly (See Section “11.15 Film Plunger Assembly” on page 11-24 for breakdown of assembly)	1
11	206456	Kit, Fuse, SW Pro-Series	1

Table 11-4: Overall Assembly

11.7 High Profile Base Assembly - Standard

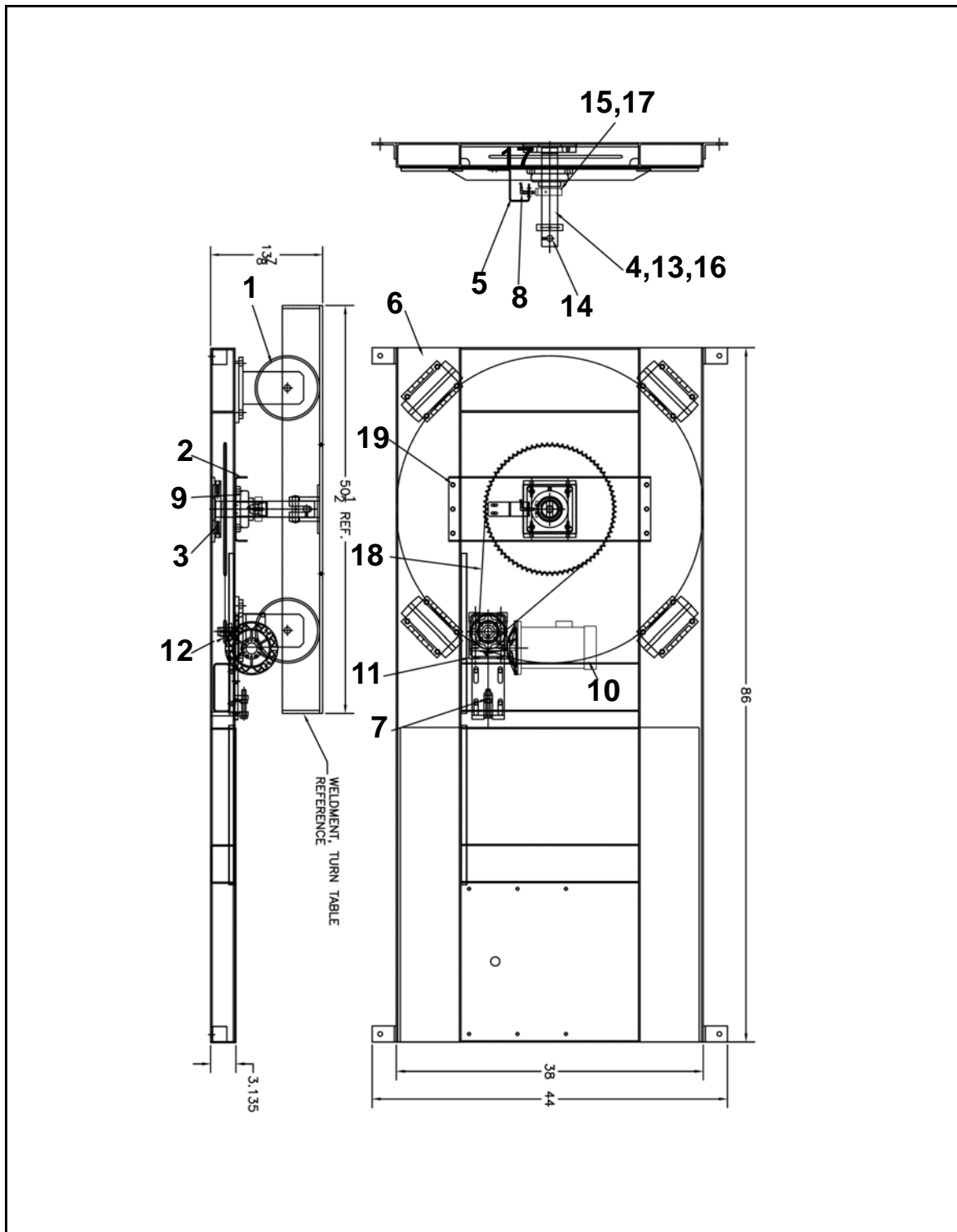


Figure 11-4. High Profile Base Assembly - Standard

Fig ref.	Part number	Description	Qty
1	820239	Caster, Wheel	4
2	224937	Channel, Bearing Top Center Shaft	1
3	224935	Plate, Bearing Bottom	1
4	235870	Weldment, Sprocket	1
5	224938	Bracket, Prox	1
6	229661	Base Weldment - Wrap & Weigh	1
7	235092	Gearbox Mounting Plate	1
8	804006.121	Proximity Sensor	1
9	822992	Bearing, FLG 50mm I.D. 4-Bolt	1
10	820904	Motor, 1/2 H.P. 90 VDC, 1725 RPM	1
11	821002	Reducer, NMRV050, 20:1, 1.14 HP	1
12	821194	Sprocket, 50BS11, 1" Bore	1
13	821998	Fitting, Nipple, 1/4" NPT, 12" Lg	1
14	219361	Mounting Pin	2
15	820875	Magnet, Rectangular	1
16	821805	Shaft Assembly	1
17	215846	Weldment, Collar, Magnet Holder	1
18	800468	Chain, Roller, #50	6ft
19	237442	Kit, Parts - W-N-W	1
20	207386	Spacer	4
21	207387	Pedestal, Scale	4
22	230494	Plate, Retainer	4
23	235095	Junction Box	1
24	823551	Rivet, Nut 3/8"-16	6

Table 11-5: High Profile Base Assembly - Standard

11.8 High Profile Base Assembly - Weigh Option

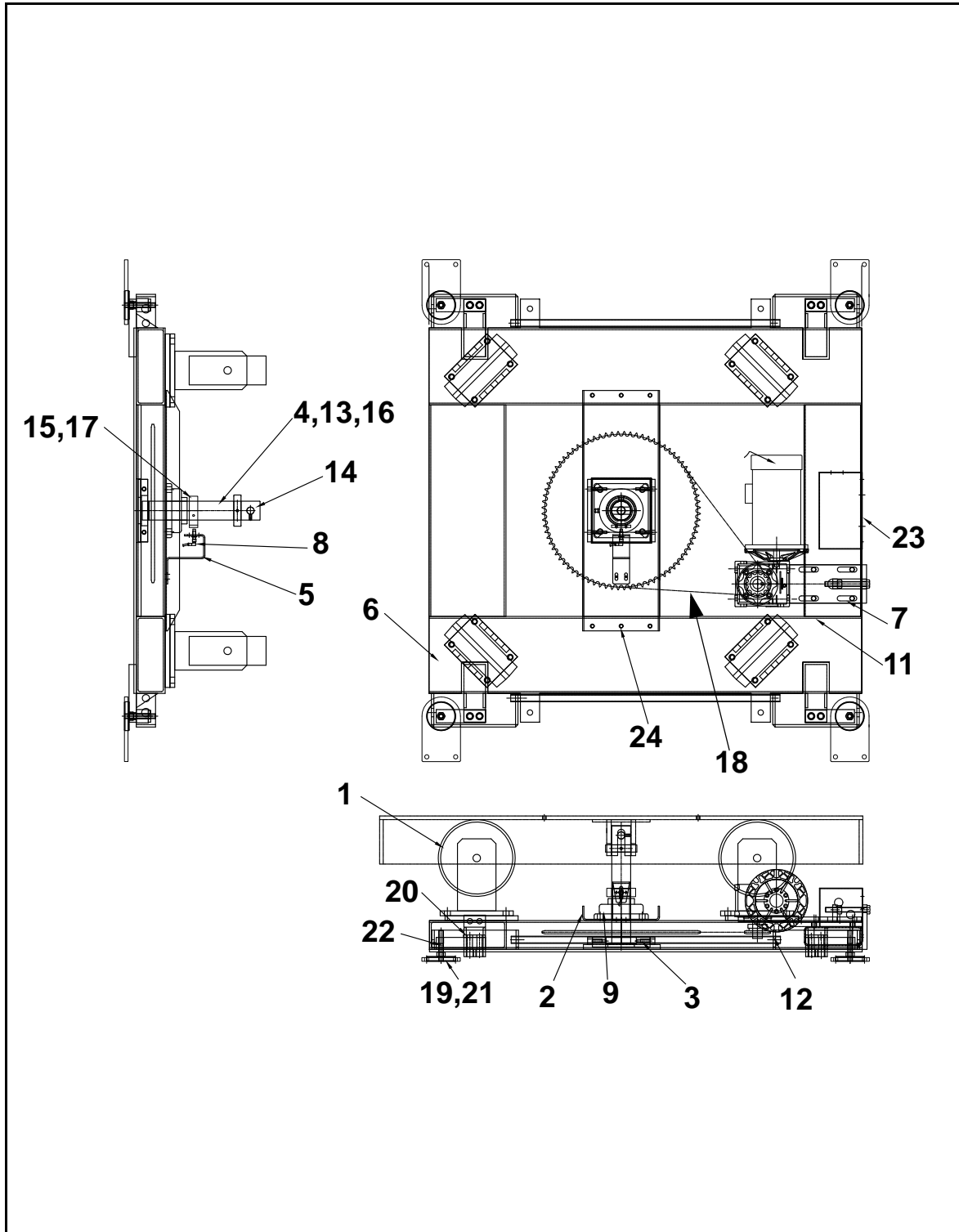


Figure 11-5. High Profile Base Assembly - Weigh Option

Fig ref.	Part number	Description	Qty
1	820239	Caster, Wheel	4
2	224937	Channel, Bearing Top Center Shaft	1
3	224935	Plate, Bearing Bottom	1
4	235870	Weldment, Sprocket	1
5	224938	Bracket, Prox	1
6	224933	Base Weldment	1
7	235092	Gearbox Mounting Plate	1
8	804006.121	Proximity Sensor	1
9	822992	Bearing, FLG 50mm I.D. 4-Bolt	1
10	820904	Motor, 1/2 H.P. 90 VDC, 1725 RPM	1
11	821002	Reducer, NMRV050, 20:1, 1.14 HP	1
12	821194	Sprocket, 50BS11, 1" Bore	1
13	821998	Fitting, Nipple, 1/4" NPT, 12" Lg	1
14	219361	Mounting Pin	2
15	820875	Magnet, Rectangular	1
16	821805	Shaft Assembly	1
17	215846	Weldment, Collar, Magnet Holder	1
18	800468	Chain, Roller, #50	6ft
19	804998.503	Load Cell - Pennsylvania Scale 4K	4
20	207386	Spacer	4
21	207387	Pedestal	4
22	230494	Plate, Retainer	4
23	235095	Junction Box	1
24	823551	Rivet Nut 3/8"-16	6

Table 11-6: High Profile Base Assembly - Weigh Option

11.9 Tower Assembly - Standard

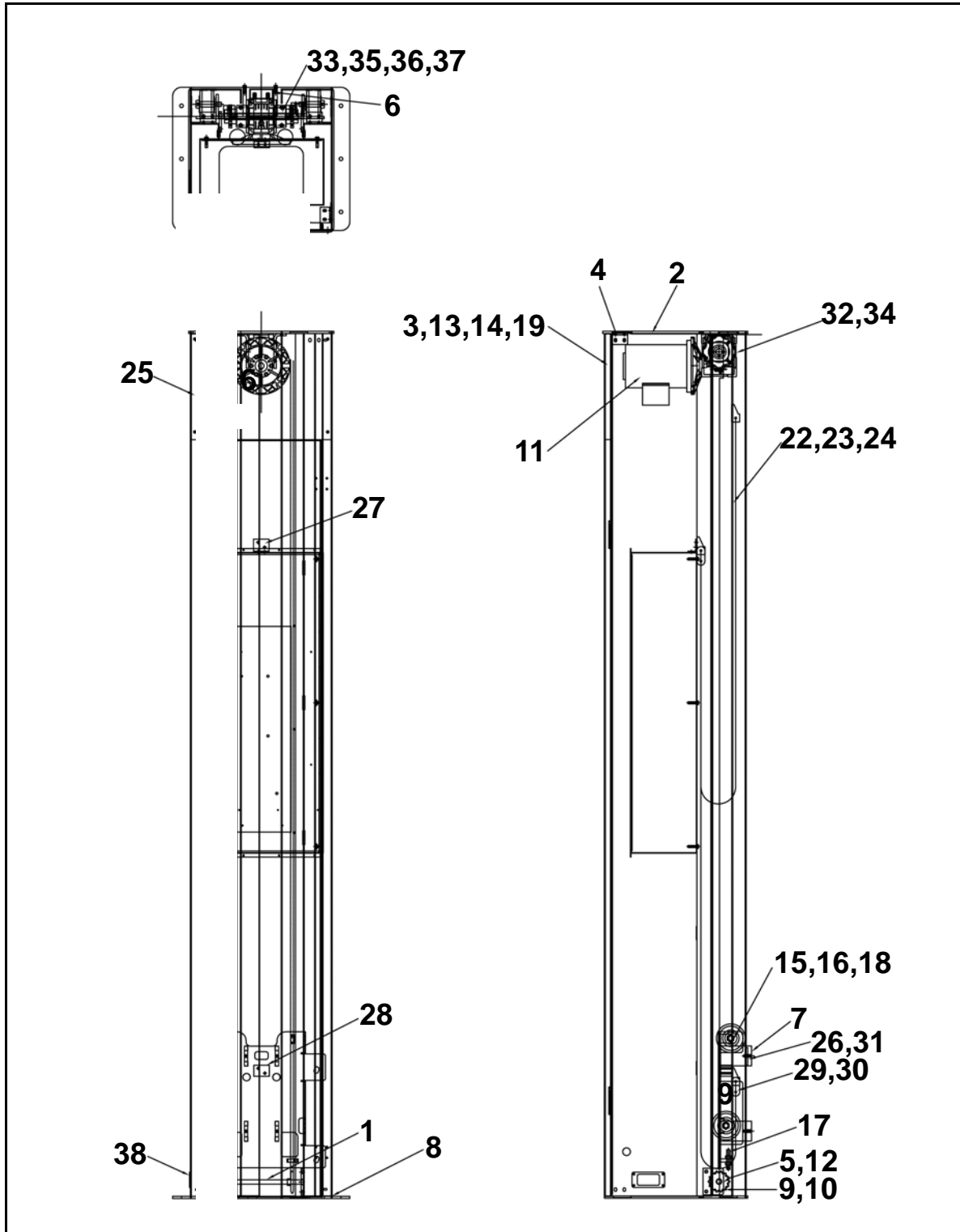


Figure 11-6. Tower Assembly - Standard

Fig ref.	Part number	Description	Qty
1	143422.113	Shaft, 0.500" Dia, 10.00" Lg	1
2	227782	Plate, Tower Top	1
3	227787	Door, Tower	1
4	227789	Bracket, Mounting, Tower Top	4
5	227790	Bracket, Idler Pulley	2
6	227792	Weldment, Center, Tower	1
7	227797	Weldment, Carriage, Film Saver	1
8	229987. 229987.001 229987.002 229987.003 229987.004	Weldment, Tower, Standard Weldment, Tower, 12" ext. Weldment, Tower, 24" ext. Weldment, Tower, 36" ext. Weldment, Tower, Std/No Logo	1
9	229365	Sprocket	2
10	800561	Collar, Shaft Set Screw	2
11	823673	Motor, 1/3 HP 90VDC, 1750 RPM	1
12	820128	Bushing, Oilite	2
13	810174	Hinge, Door	2
14	801355	Door Handle	1
15	800325.016	Bolt, Shoulder 5/8" Dia. X 1-3/4" Lg	8
16	820234	Wheel, Caster	8
17	204835	Coupling, Chain, #40	2
18	800275.071	Washer, Flat 5/8" X 1-1/4" X 14 ga.	16
19	822953	Latch, Pawl, Slotted	2
22	205905	Power Cord Assembly	1
23	823533 820284	Chain, Roller, #40 156" Lg Chain Roller, #40 for 36" ext.	2
24	800502	Link, Connector, #40	4
26	204603.000A	Bracket, Magnet Mounting	1
31	822976	Magnet, Rectangular, Adhesive Backed	2
32	821786	Gearbox, Worm, 40:1 56C Input	1
33	235901	Shaft, Gearbox	1
34	235908	Bracket, Mounting Drive	2
35	800335.012	Ring, External Snap 3/4"	4
36	800562	Collar, Shaft, Set Screw, 3/4"	2
37	821168	Sprocket	2
38	237476	Plate, Cover	1
39	243941	Assembly, Harness	1

Table 11-7: Tower Assembly - Standard

11.10 Tower Base Assembly

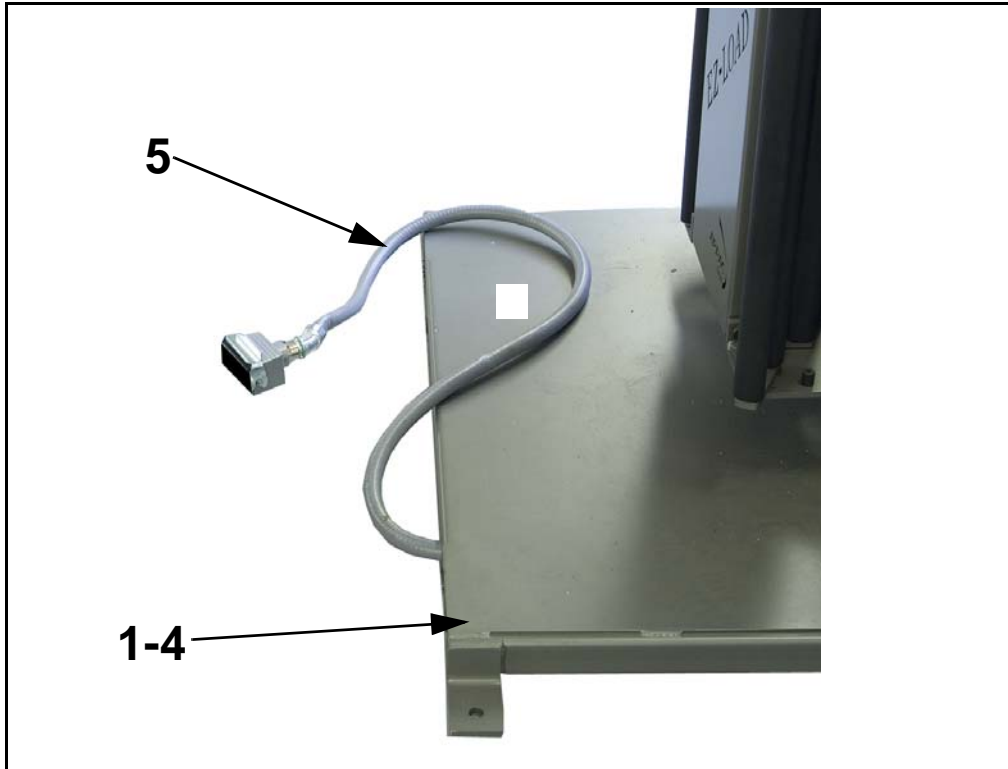


Figure 11-7. Tower Base Assembly

Fig ref.	Part number	Description	Qty
1	229668	Weldment, Base Tower Split Frame	1
2	825005.056	Connector, Insert Female, 10	1
3	825005.053	Connector, Base, Panel Mount	1
4	804997.942	Conduit Connector, 90 deg. 1/2"	1
5	237441	Base to Tower Cable Assembly	1

Table 11-8: Tower Base Assembly

11.11 Side Mounted Film Saver Assembly

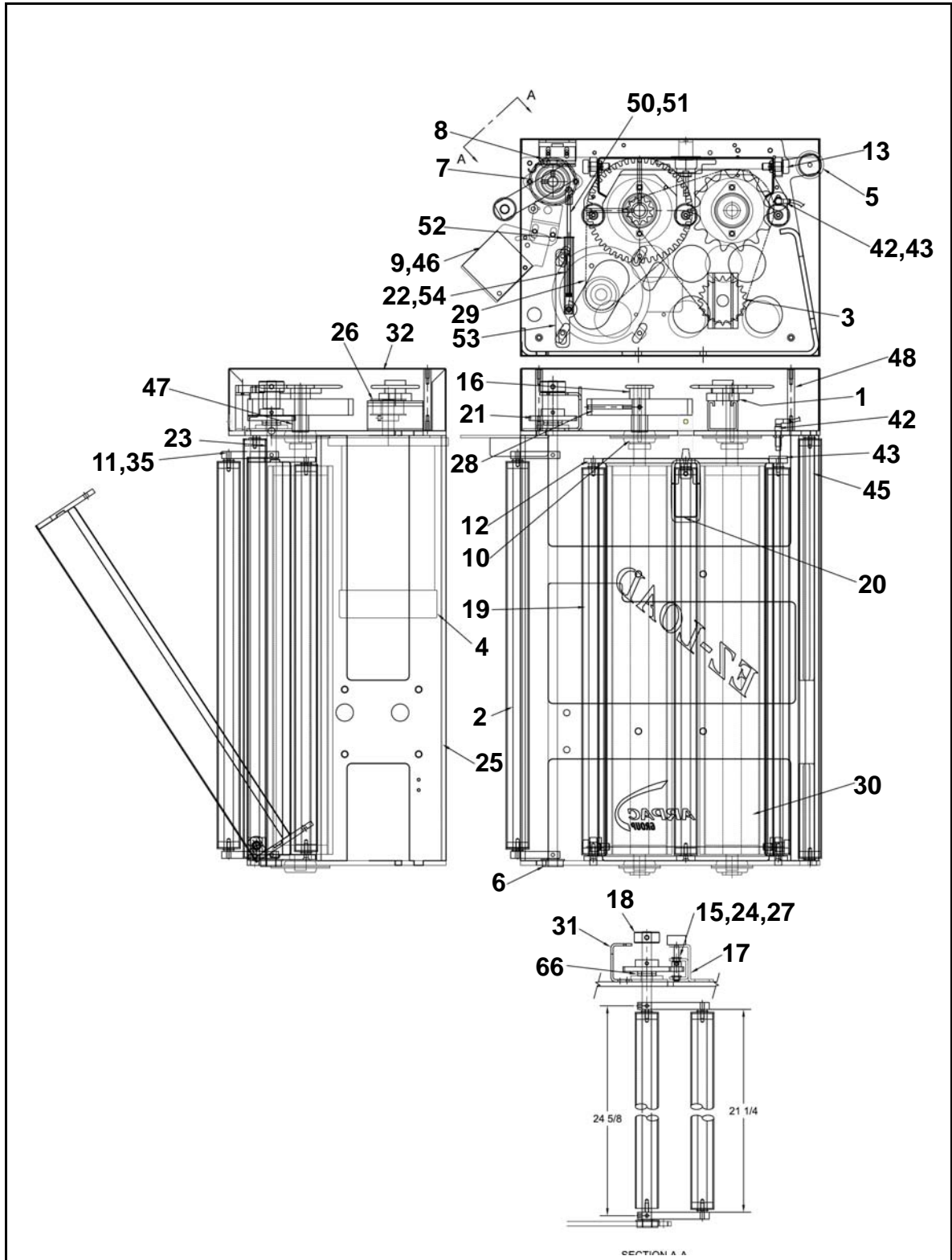


Figure 11-8. EZ/Pro Side Mounted Film Saver Assembly

Fig ref.	Part number	Description	Qty
1	224978.	Spacer, Idler Sprocket	1
2	224903.	Shaft, Roller	4
3	800912.	Sprocket	1
4	823674.	Motor, 1/2 H.P.	1
5	214611.003A	Roller Assembly	1
6	820115.	Bearing Flange Rad	1
7	821470.	Bearing Flange	1
8	101412.	Stop Lever, Transfer Rack Film	2
9	804007.165	Photo Sensor	1
10	820086.	Bearing Flange Black	4
11	224913.	Plate, Dancer Bar	2
12	224856.	Weldment, Roller Cage, 20" Film	1
13	800324.003	Bolt, Shoulder, 1/2 Dia. X 1/2" Lng	2
14	241144.	Motor Mounting Ring Spacer	1
15	820126.	Bushing, Oilite	2
16	821152	Sprocket	1
17	214477	Weldment, Pot Mounting Bracket	1
18	800561	Collar, Shaft Set Screw	1
19	214611.002A	Roller Assembly	5
20	822924.	Latch, Lift & Turn Compression	1
21	218352	Gear, Spur	1
22	825104.	Spring, Compression	1
23	211969.000A	Shaft, Dancer	1
24	804998.351	Pot, 10K Ohm	1
25	224866	Weldment, Film Saver Frame	1
26	821477	Pulley, Timing	1
27	820827	Gear, Spur	1
28	230209	Pulley, Timing	1
29	823049	Belt, Timing	1
30	211973.000C	Weldment, Final, Roller	2
31	214480.	Bracket, Microswtch Mounting	1
32	224905.001	Guard, Film Saver, Right Hand	1
33	804998.553	Switch-Limit	1
34	800292.019	Washer, Lock Split 5/8"	1
35	800317.010	Pin, Roll 3/16" Dia X 1 Lg	2
37	800275.065	Washer, #8 Flat	2

Table 11-9: EZ/Pro Side Mounted Film Saver Assembly (1 of 2)

Fig ref.	Part number	Description	Qty
38	800328.006	Socket Head Screw 1/4"-20 X 3/4"	1
39	800341.005	Screw, Set, 10-32 X 1/2"	2
40	800328.013	Socket Head Screw 1/4"-20 X 1 1/4"	1
41	800325.003	Shoulder Bolt	1
42	804006.121	Proximity Sensor	1
43	822976.	Magnet	.5"
44	800267.003	Flat Head Screw 1/4-20 X 1/2 SS	2
45	224903.001	Roller Shaft	1
46	224955.	Plate, Mounting	1
47	224977.	Spacer, Pulley	1
48	229619	Spacer, Mounting Cover	1
49	800292.005	Washer, 1/4" Split Lock	10
50	800246.040	Socket Head Screw 10-32 X 5.5"	1
51	237929.	Clevis, Spring	1
52	237928	Retainer, Spring	1
53	237930.001	Weldment, Spring Mounting Bracket	1
54	825143.	Bushing, Oilite	3
55	800322.003	Shoulder Bolt, 5/16" X 5/8" Lg	1
56	800321.002	Shoulder Bolt, 1/4" X 3/8" Lg	1
57	815213.	Washer, Oilite	2
58	811314.	Washer, Oilite	2
59	800292.012	Washer, 3/8" Split Lock	8
60	817011.002	Washer, 5/16" External Lock	1
61	800238.009	Binder Head Screw, 10-32 X 1 1/2"	1
62	800238.005	Binder Head Screw, 10-32 X 3/4"	4
63	800282.012	Hex Head Bolt, 3/8"-16 X 1 1/4"	4
64	800282.006	Hex Head Bolt, 3/8"-16 X 3/4"	4
65	800278.011	Hex Head Bolt, 1/4"-20 X 1/2"	10
66	800275.023	Washer, Flat 1/2" Hardened	2
67	800292.001	Washer, #10 Split Lock	9
68	800290.006	Nut, Hex 1/4"-20	1
69	800307.003	Screw, Pan Head, 6-32" X 1"	2
70	800238.002	Binder Head Screw, 10-32 X 3/8"	5

Table 11-10: EZ/Pro Side Mounted Film Saver Assembly (2 of 2)

11.12 Film Roll Support Assembly

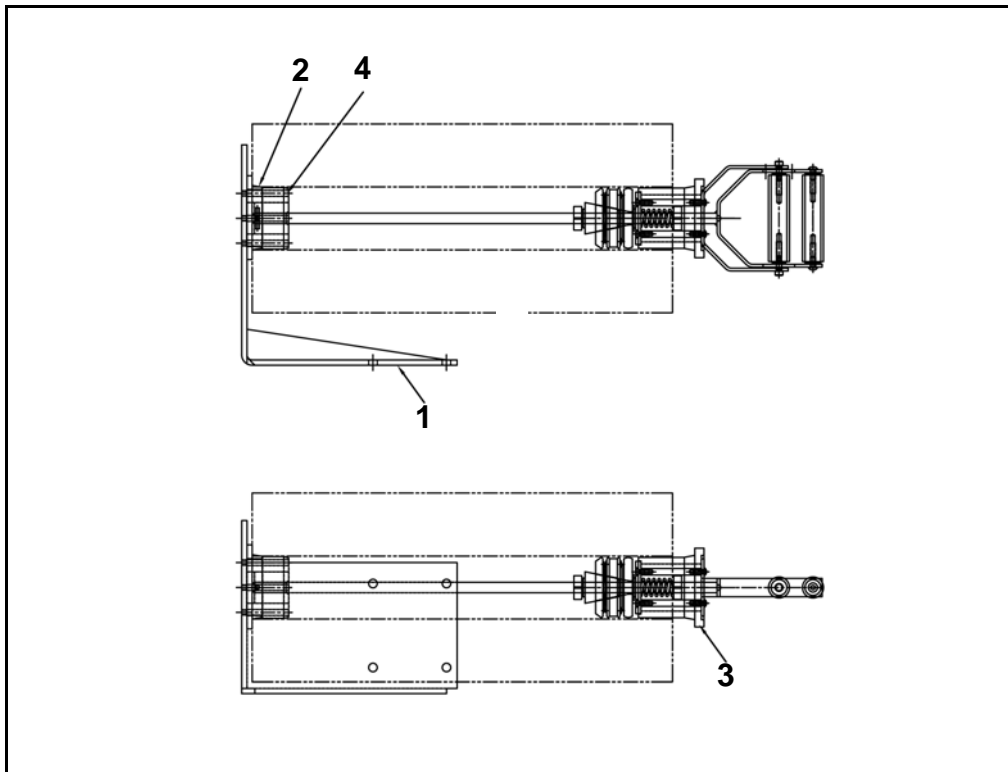


Figure 11-9. Film Roll Support Assembly

Fig ref.	Part number	Description	Qty
1	214497.002	Film Holder, Left Hand	1
2	204737	Bearing, Mandrel Thrust	1
3	229000	Quick Load Mandrel Assembly (See Section "11.13 Quick Load Mandrel Assembly" on page 11-21)	1
4	228640	Receiver, Rod	1

Table 11-11: Film Roll Support Assembly

11.13 Quick Load Mandrel Assembly

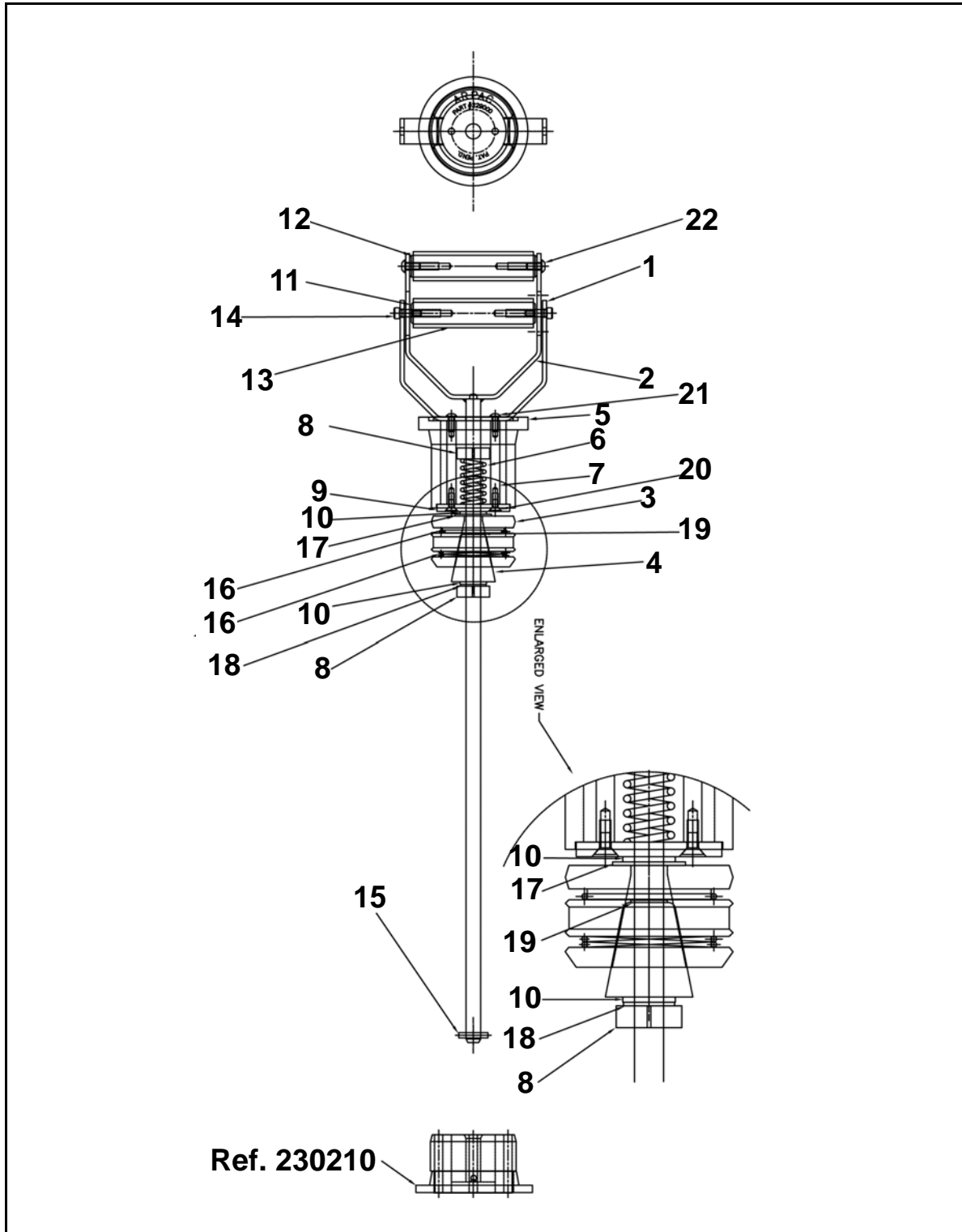


Figure 11-10. Quick Load Mandrel Assembly

Fig ref.	Part number	Description	Qty
1	229494	Base Plate, Inside	1
2	229493	Weldment, Shaft, Handle	1
3	228637	Cone Shaped Pusher Head	1
4	228635	Cone, Slide	1
5	229362	Bearing, Thrust, Mandrel	1
6	822928	Compression Spring	1
7	229496	Shaft, Spacer	2
8	808304	Collar, Shaft, Clamp	2
9	229497	Washer	1
10	802945	Bearing, Thrust	2
11	229210	Handle, Lower	1
12	229205	Handle, Roll	1
13	229948	Handle, Black, Modified	2
14	800321.004	Bolt, Shoulder	2
15	807729	Pin, Roll 3/16" Dia. 1" Lg SS	1
16	822927	O-Ring 3/32" Dia. X 2-1/16" I.D.	2
17	800275.025	Washer, Flat 1/2" Stainless Steel	1
18	800275.024	Washer, Flat 1/2" Stainless Steel	1
19	800335.006	Ring, Snap, External	1
20	800266.002	Flat Socket Head Screw, 10-32	2
21	800238.010	Binder Socket Head Screw, 10-32	2
22	800232.011	Binder Socket Head Screw, 1/4"-20	2

Table 11-12: Quick Load Mandrel Assembly

11.14 Swift Change Film Support Roll Assembly

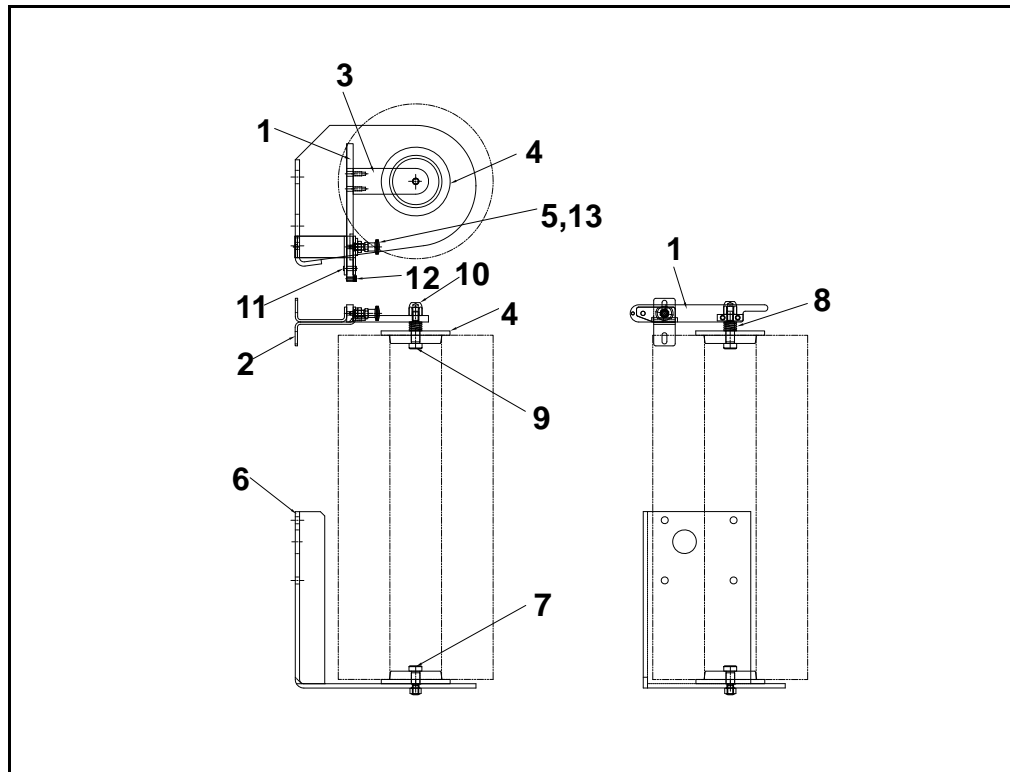


Figure 11-11. Swift Change Film Support Roll Assembly

Fig ref.	Part number	Description	Qty
1	224906.	Lift Bar	1
2	224907.	Weldment, Top Mounting Bracket	1
3	224911.	Plate, Core Bearing	1
4	224617.	Thrust Bearing	2
5	810565.	Plunger, Index	1
6	214497.002	Weldment, Film Holder	1
7	800324.007	Bolt, Shoulder, 1/2" Dia X 3/4" Long	1
8	801031.	Spring, Compression	1
9	800324.10	Bolt, Shoulder, 1/2" Dia. X 1 1/4"	1
10	810743.001	Nut, Acorn, 3/8"-16	1
11	822974.	Clevis Pin	1
12	800328.032	Socket Head ap Screw 1/4-20X 1/4	1
13	823229.	Nut, 3/8"-24 Hex Jam	1

Table 11-13: Swift Change Film Support Roll Assembly

11.15 Film Plunger Assembly



Figure 11-12. Film Plunger Assembly

Fig ref.	Part number	Description	Qty
1	204618	Film Plunger Solenoid Assembly (See Section "11.16 Film Plunger Solenoid Assembly" on page 11-25 for breakdown of assembly)	1
2	221089	Cover, AFTD	1
3	221088	Bracket, Mounting, AFTD Solenoid	1

Table 11-14: Film Plunger Assembly

11.16 Film Plunger Solenoid Assembly

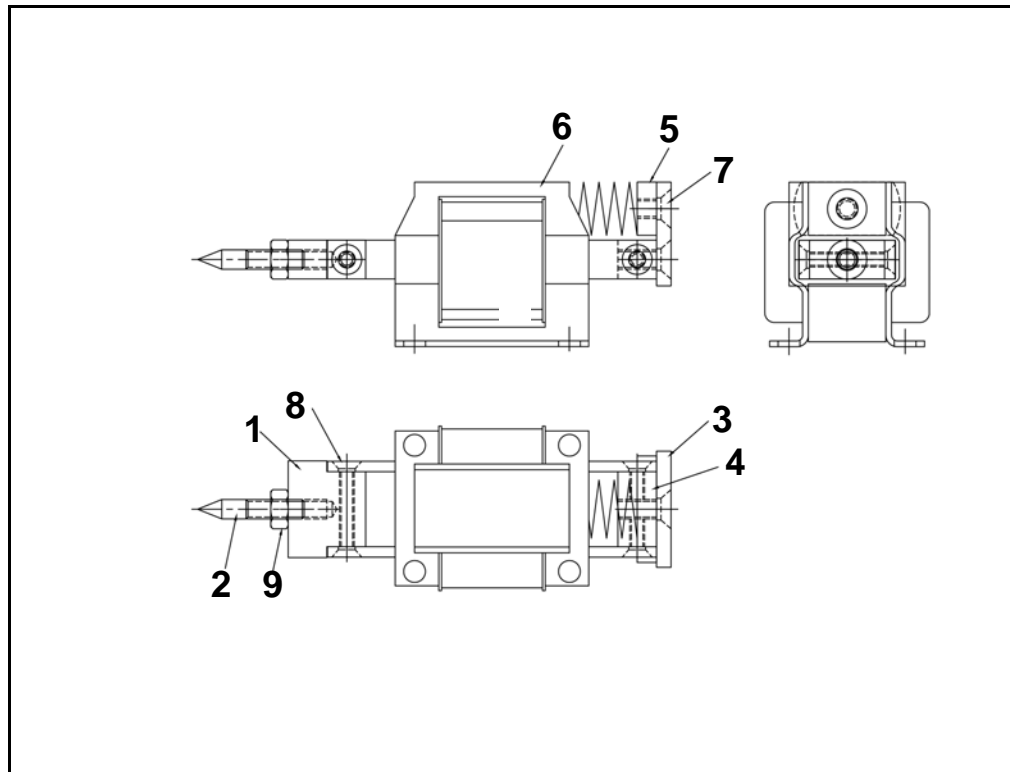


Figure 11-13. Film Plunger Solenoid Assembly

Fig ref.	Part number	Description	Qty
1	204620	Block, Holder, Plunger	1
2	204622	Plunger, AFTD	1
3	204625	Mounting Plate, Return Springs	1
4	204626	Block, Return Spring	1
5	804998.180	Nut, Unistrut, 1/4"-20 With Spring	1
6	229664	Solenoid, Modified	1
7	800267.002	Flat Socket Head Screw, 1/4"-20 X 1/2"	3
8	820499	Flat Head Slot Screw, 10-24 X 1/2"	4
9	800290.006	Nut, Hex, 1/4"-20	1

Table 11-15: Film Plunger Solenoid Assembly

11.17 Control Assembly (Part 1)

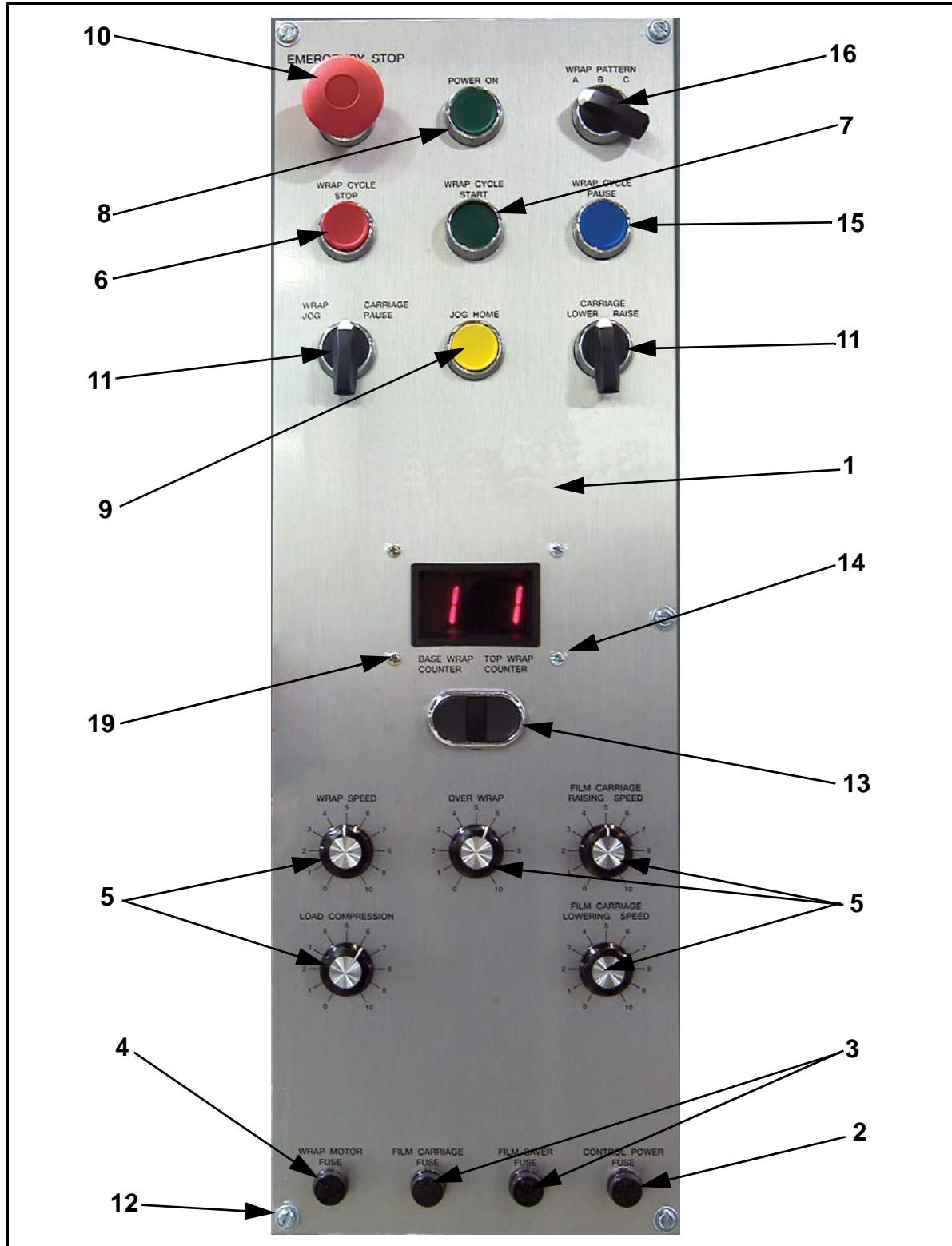


Figure 11-14. Control Assembly (Part 1)

Fig ref.	Part number	Description	Qty
1	223181.	Cover, Control Panel	1
2	804998.226	Fuse, Glass AGC, 2 Amp 250VAC	1
3	804998.231	Fuse, Glass AGC, 8 Amp 250VAC	1
4	804998.233	Fuse, Glass, AGC, 10 Amp 250VAC	2
5	804998.313	Knob	5
6	804004.170	Push Button, Red	1
7	804004.173	Push Button, Green	1
8	804004.168	Push Button, Green	1
9	804004.172	Push Button, Yellow	1
10	804004.175	Push Button, Mushroom Head	1
11	804021.031	Selector Switch	2
12	800308.007	Screw, Pan Head, 8-32 X 1"	6
13	804004.176	Pushbutton, 2 Position	1
14	820864	Lens - Bezel & Filter	1
15	804004.174	Push Button, Blue	1
16	804021.032	Selector Switch, 3 Position	1
19	800312.002	Screw, Pan Head Phillips, 6-32 X 3/8"	4

Table 11-16: Control Assembly (Part 1)

11.18 Control Assembly (Part 2)

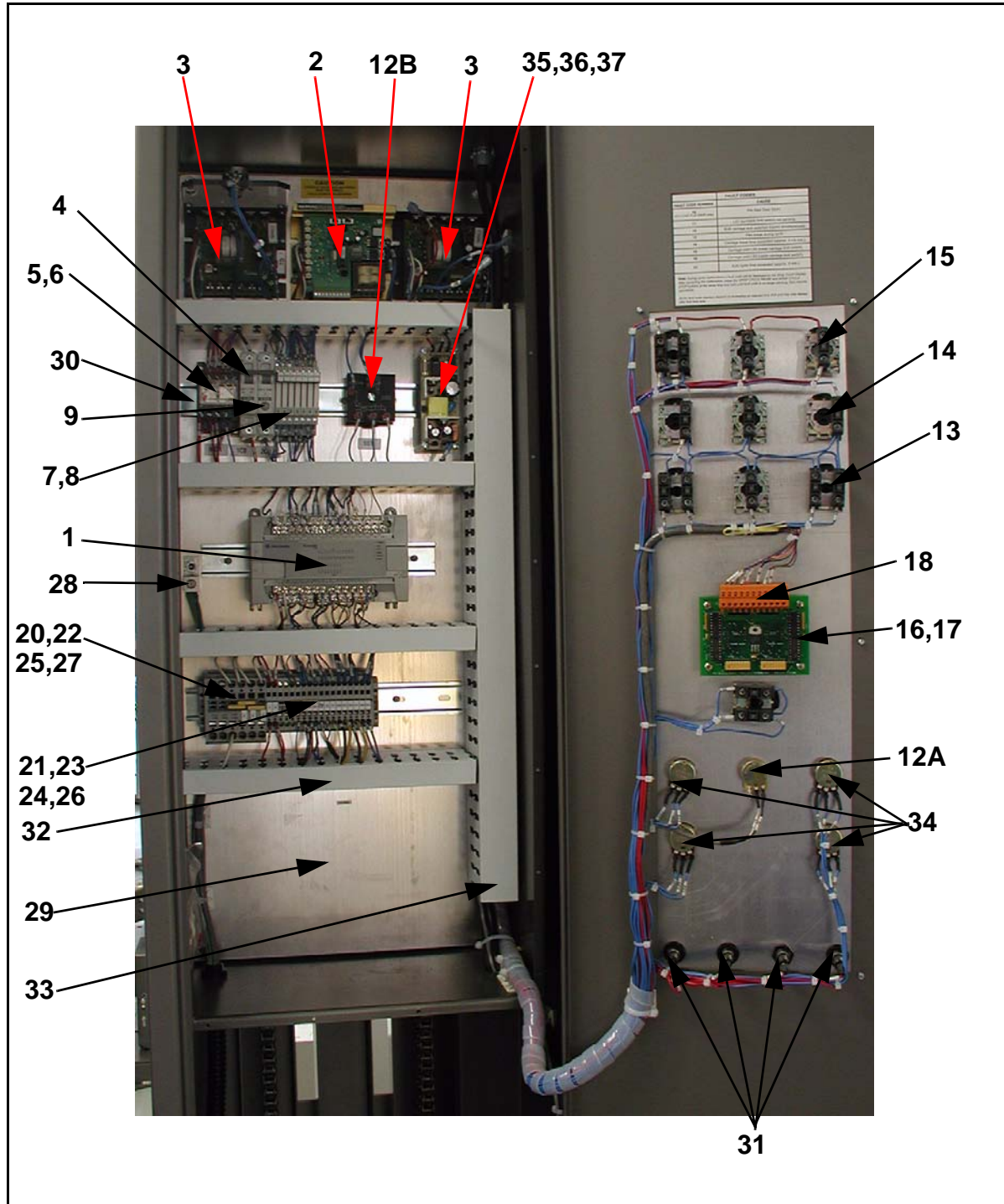


Figure 11-15. Control Assembly (Part 2)

Fig ref.	Part number	Description	Qty
1	804005.188	PLC, MLX 1200	1
2	804012.182	Drive, Regenrative 1/4-1HP	1
3	804012.190	Drive, DC, 1/4 HP 90 VDC	2
4	804000.011	Circuit Breaker, 20 Amp	1
5	804008.087	Relay, 4 Pole, 10A, 120VAC	1
6	804008.088	Relay Socket for 4 Pole Relay	1
7	804008.089	Relay, 1 Pole 6A, 24VDC	6
8	804008.112	Relay Jumper, Extra Slim Blue	1
9	804000.001	Circuit Breaker, 1P 1 Amp	1
10	804008.116	Relay, Diode	2
11	804008.103	Relay, Socket, 8 Blade for 2 Pole	2
12A & 12B	804008.101	Relay, Time Off Delay Kit	1
13	804004.180	Push Button Latch	8
14	804004.177	Push Button Contacts, 22mm 1NO/ 0/NC	9
15	804004.178	Push Button Contacts, 22mm 0NO/ 1/NC	2
16	211650	Counter Display	1
17	804998.517	Nylon Spacer	4
18	804998.025	Connector	1
19	804008.098	Relay Marker	1
20	804022.079	Terminal Block, Gray 33 AMP Screwless	6
21	804022.075	Terminal Block, Gray 33 Amp	18
22	804022.073	Terminal Block, End Anchor	2
23	804022.074	Terminal Block, End Barriers	1
24	804022.076	Terminal Block, End Barriers	1
25	804022.077	Terminal Block, Markers, Snap In	1
26	804022.078	Terminal Block, Markers, Snap In	1
27	804022.082	Terminal Block, Center Jump	3
28	804010.087	Connector, Burndy	1
29	227826	Plate, Electrical Panel	1
30	804993.030	DIN Rail	1
31	804015.133	Fuse Holder	4
32	804015.150	Fuse, 0.25A 250V Fast Acting Glass	1
33	804039.002	Wire Duct	4

Table 11-17: Control Assembly (Part 2)

Fig ref.	Part number	Description	Qty
34	804039.003	Wire Duct	1
35	804998.350	Pot-10K Ohm, Single Short Stem	4
36	804998.519	Spacer, Threaded Hex 8-32 X 1.125"	4
37	804998.517	Spacer, Nylon Threaded Hex, 6-32 X 1/4" X 3/4"	4
38	804998.360	Power Supply, Switching 24 VDC	1
39	804998.260	Heater, Hoffman, 400 watt (for Cold Pack Option) - Item not Shown	1

Table 11-17: Control Assembly (Part 2)